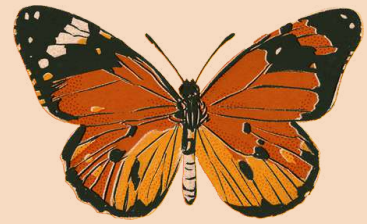


Summer Exchange in National Taiwan University



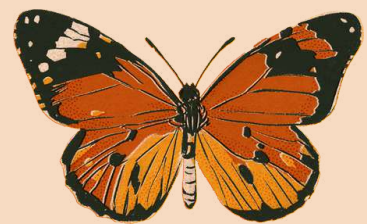
Agenda



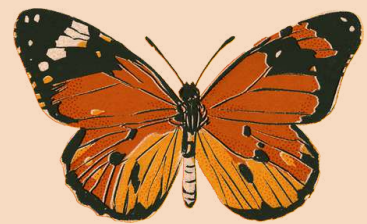
Living in Taiwan



Exploring the beauties of Taiwan



Nature Attractions



Local Cuisine



Ranked among the Top 3 Safest Cities in the world

Safest Cities In The World



Abu Dhabi regularly tops the rankings from Numbeo, and the achievement marks the sixth year in a row that has been named as the safest city in the world. As of 2023.

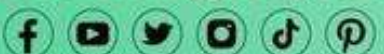
Abu Dhabi		88.3	Yerevan		78.2
Doha		86.0	Groningen		77.8
Ajman		84.9	Zagreb		77.7
Taipei		84.8	Tampere		77.6
Sharjah		84.6	Cluj-Napoca		77.6
Quebec City		83.8	Eindhoven		77.4
Dubai		83.7	Coquitlam		76.8
Bern		82.3	Stavanger		76.7
San Sebastian		81.3	Irvine		76.1
Munich		81.0	Reykjavik		76.1
Zurich		80.9	Chiang Mai		76.0
Eskisehir		80.8	Timisoara		76.0
Muscat		80.1	Tokyo		75.8
Manama		79.9	Seoul		75.4
Trondheim		79.1	Prague		75.4
The Hague		78.8	Helsinki		75.0
Tartu		78.8	Mangalore		74.5
Hong Kong		78.7	Aalborg		74.5
Basel		78.5	Bergen		74.4
Ljubljana		78.3	Oakville		74.4

SOURCE: Numbeo

www.rankingroyals.com



RankingRoyals



Cost of Living

- Lower compared to the U.S.

Currency: TWD [Sticky Currency](#) [Switch to metric measurement units](#)

 Restaurants	Taipei  Edit	Chicago, IL  Edit	Difference
Meal, Inexpensive Restaurant	200.00 NT\$ (6.30 \$)	634.99 NT\$ (20.00 \$)	+217.5 %
Meal for 2 People, Mid-range Restaurant, Three-course	1,200.00 NT\$ (37.80 \$)	3,174.97 NT\$ (100.00 \$)	+164.6 %
McMeal at McDonalds (or Equivalent Combo Meal)	160.00 NT\$ (5.04 \$)	349.25 NT\$ (11.00 \$)	+118.3 %
Domestic Beer (1 pint draught)	65.00 NT\$ (2.05 \$)	222.25 NT\$ (7.00 \$)	+241.9 %
Imported Beer (12 oz small bottle)	90.00 NT\$ (2.83 \$)	254.00 NT\$ (8.00 \$)	+182.2 %
Cappuccino (regular)	113.12 NT\$ (3.56 \$)	179.27 NT\$ (5.65 \$)	+58.5 %
Coke/Pepsi (12 oz small bottle)	33.49 NT\$ (1.05 \$)	92.03 NT\$ (2.90 \$)	+174.8 %
Water (12 oz small bottle)	23.16 NT\$ (0.73 \$)	82.30 NT\$ (2.59 \$)	+255.4 %

Language

- Plenty of people speak English in Taipei
- Yes, you can get by without much Chinese



Main Library



NTU Sport Center



Drunken Moon Lake



NTU Track Field



YouBike

YouBike 2.0

Every 30 minutes in 4 hours

10 / NT\$

See "Details" for government subsidy

- NT\$ 20 per 30 minutes in 4-8 hours
- NT\$ 40 per 30 minutes for over 8 hours
- Less than 30 minutes still count as 30 minutes



Taipei Riverside Bikeway



Taipei Mass Rapid Transit (MRT)

- Clean
- Punctual
- Station located right next to the campus



Taipei Mass Rapid Transit (MRT)

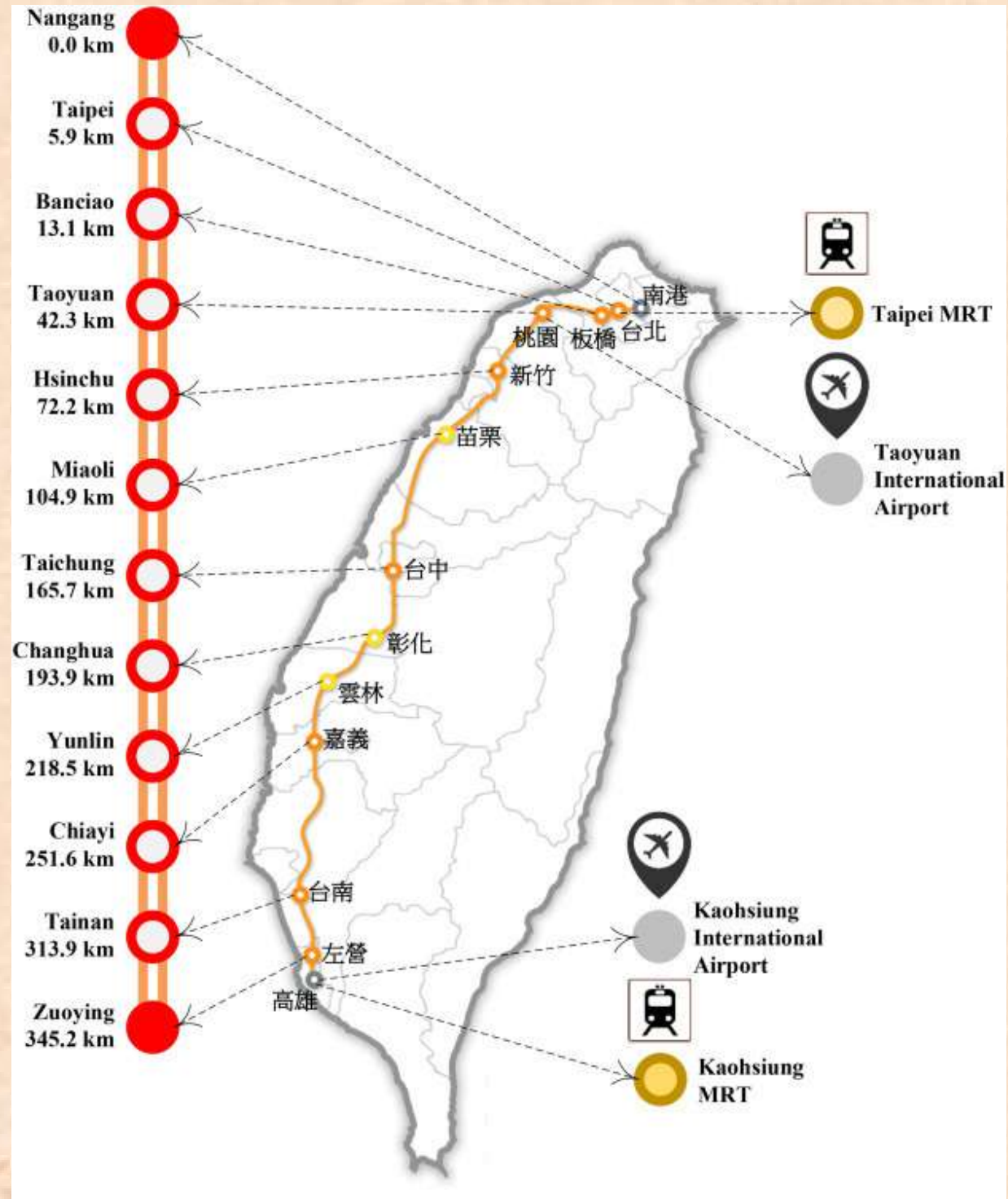


Taipei Mass Rapid Transit (MRT)

- MRT station located right next to NTU



Taiwan High Speed Rail



XiangShan Observation Deck



Kao Hsiung

Welcome to
Southern Taiwan



Kao Hsiung



Kao Hsiung



Dragon Boat Festival



Dragon Boat Festival



Shuiyuan campus, Boyuan 7-11



Taiwanese Temple Culture



Wenchang Temple

Students who come to pray for success during the examination period



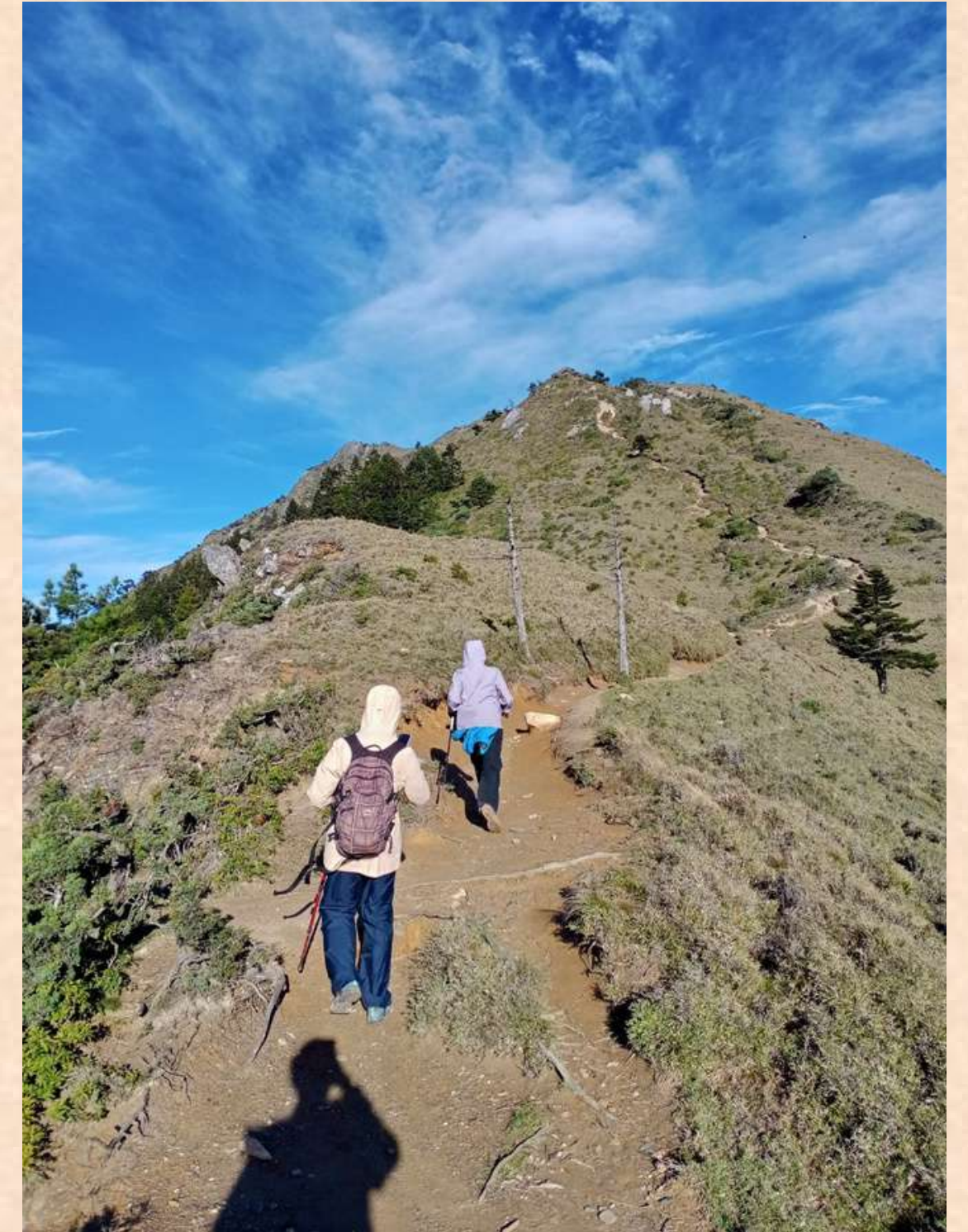
Mountain Hiking: Jiaming Lake National Trail



Mountain Hiking: Jiaming Lake National Trail

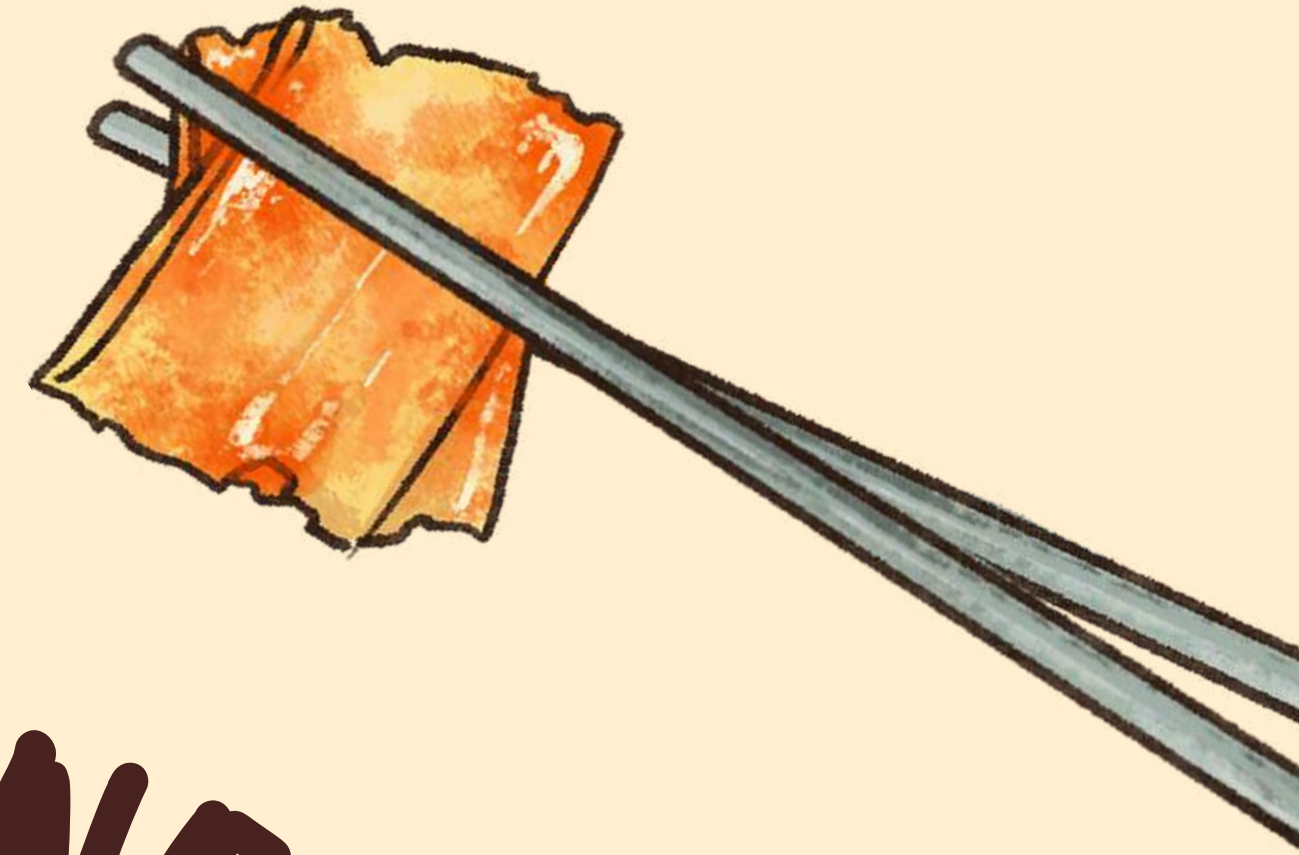
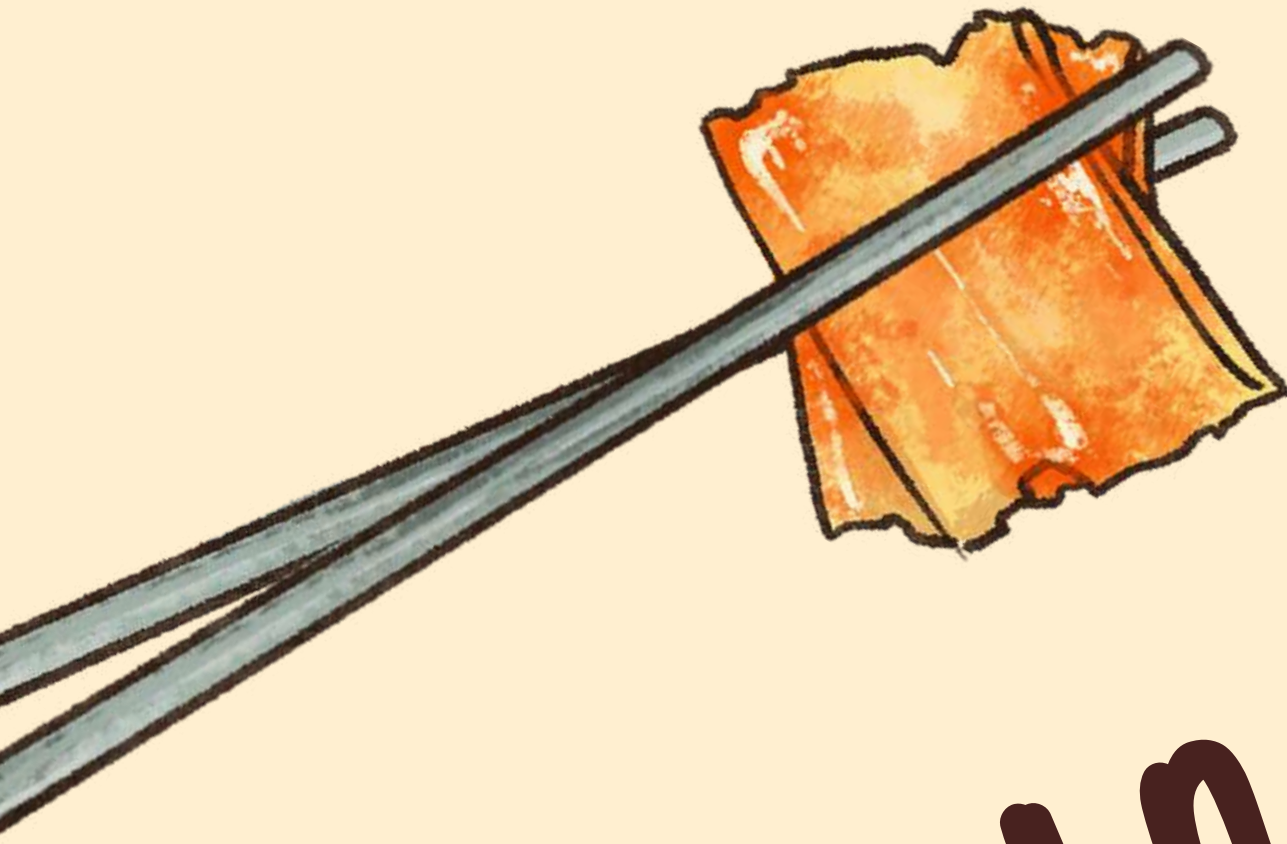
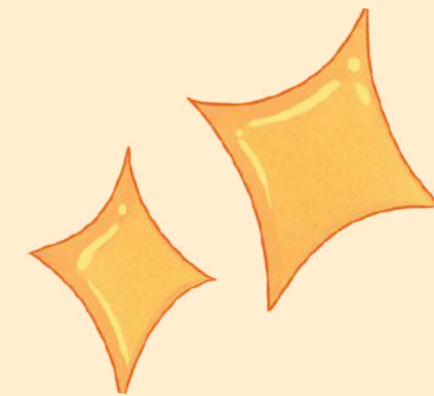
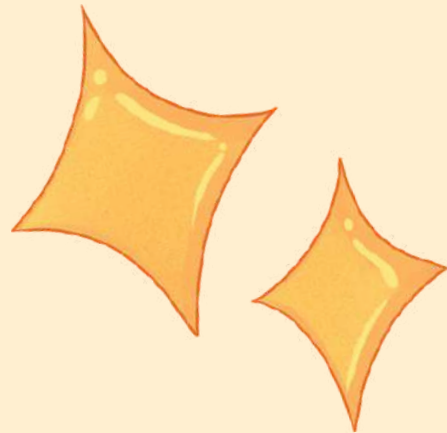


Mountain Hiking: Jiaming Lake National Trail



TAIWAN

LOCAL CUISINE



Hotpot

Perfect for a cold day



Braised Pork rice

Succulent, savory, aromatic,
comforting, iconic



Beef Noodle

Taste heaven with every slurp



